

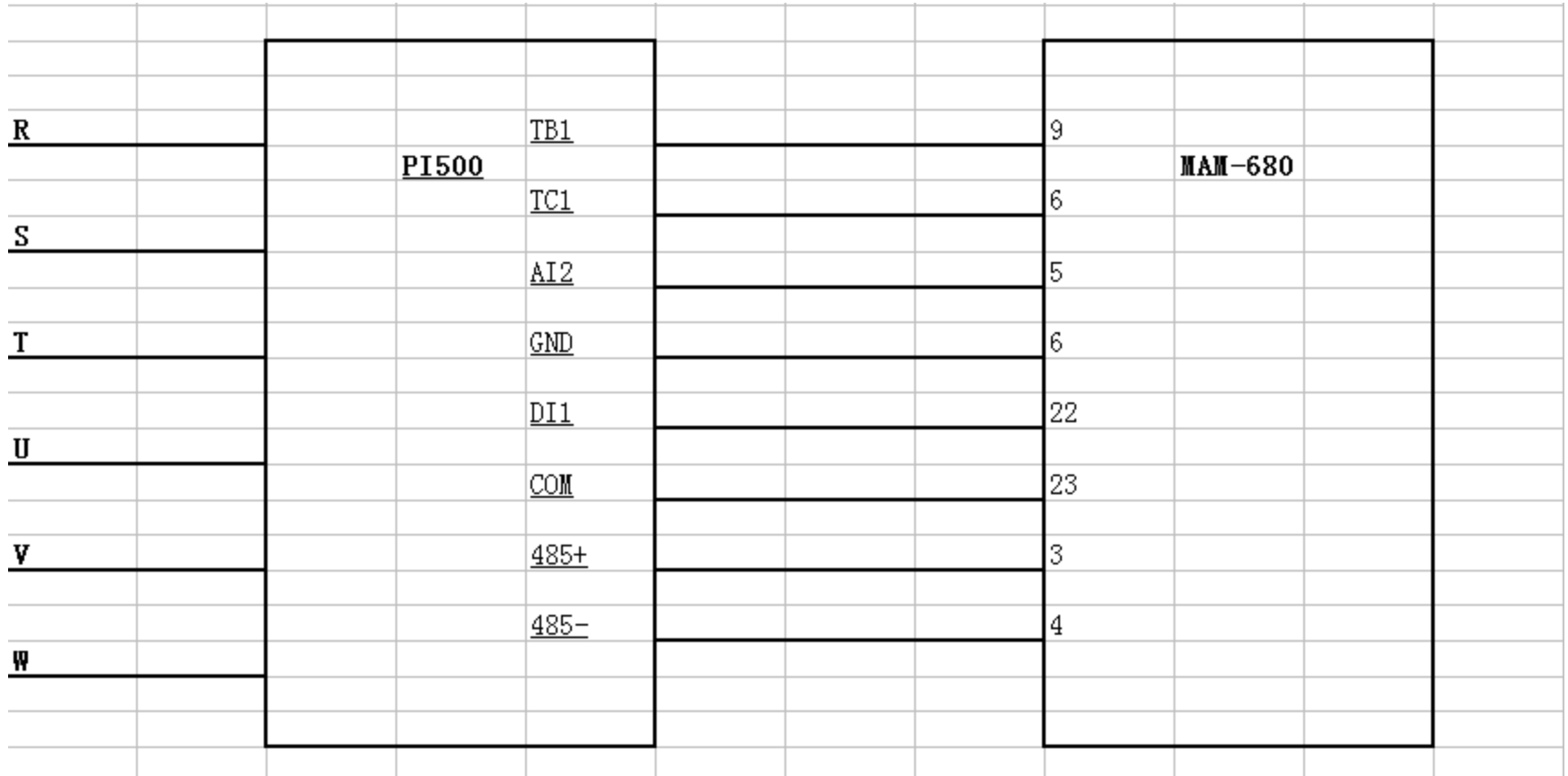
Powtran PI500 inverters were used for the Air Compressor

Project introduction

160kW Air compressors system, customer need use PI500 inverter communicate with MAM-680 controller.

The controller displays the current, frequency, and output power of the inverter, pressure 6.5-8Mpa, inverter working frequency 0-50HZ, frequency inverter fault output, 4-20mA speed adjust.

PI500 wiring diagram with the controller



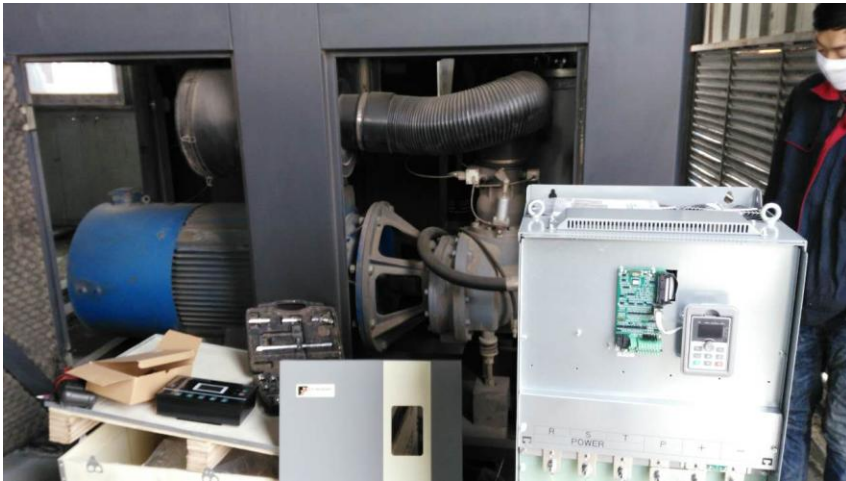
MAM-680 controller parameters



PI500 Inverter parameter setting

Code	Parameter function	Parameter setting
F0.03	Frequency source master	3
F0.11	Command source selection	4
F1.16	AI2 Minimum input	2
F2.02	Relay 1 output selection	2
F9.00	baud rate	6005
F9.01	data format	1
F9.02	Local address	1
F9.03	Response delay	2
F9.05	Data transfer format	31

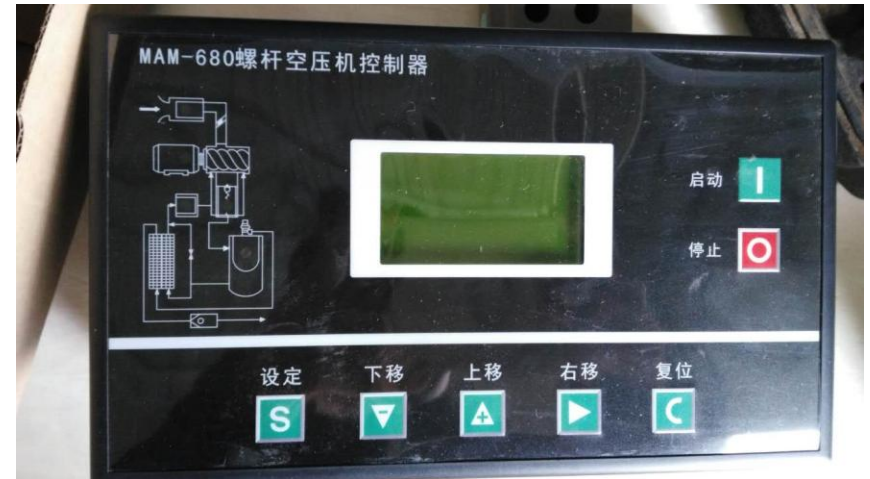
On-site installation



On-site installation



On-site installation



On-site installation

